



## Veterans Day Boat Parade 2023

### SKIPPER'S INFO AND INSTRUCTIONS

PLEASE READ ALL INFORMATION AND FOLLOW INSTRUCTIONS. WE WANT YOU TO HAVE A GOOD TIME AND ENSURE THAT SPECTATORS ENJOY SEEING ALL OF THE BOATS IN THE PARADE.

QUESTIONS: Larry Blumberg,  
[executivedirector@fleetweeksandiego.org](mailto:executivedirector@fleetweeksandiego.org)

#### PARADE TIMES

- Sunday, 12 November
- Staging Area (See starting the parade section below): Arrive between 9 A.M. and 9:15 A.M. Parade Underway at 9:30 A.M.
- Monitor VHF Channel 6 (Perimeter Control) for any announcements and welcome at 9:15 A.M.

BEFORE THE PARADE: Times for pickup of Fleet Week Commemorative Tee Shirts and Boat numbers will be promulgated prior to 1 November. For San Diego Boats, a location will be established on Shelter Island. For Coronado Boaters, we find a suitable location on Coronado.

#### BOAT NUMBER:

1. Display forward on the port bow. Used for boat identification only.
2. Your parade boat number does not indicate your position in the parade.
3. Call out number when passing the judges aboard the "Californian" at the Maritime Museum.
4. Judges must see the boat number in order to judged.

#### USCG "SPECIAL LOCAL REGULATIONS":

1. *The Coast Guard designates parade route as a special marine event. A special local regulation has been issued. Refer to local Notice to Mariners for additional information.*
2. Area of the parade route will be intermittently closed to all other vessel traffic.
3. Coast Guard is empowered to forbid and or control any vessel movement in regulated area.

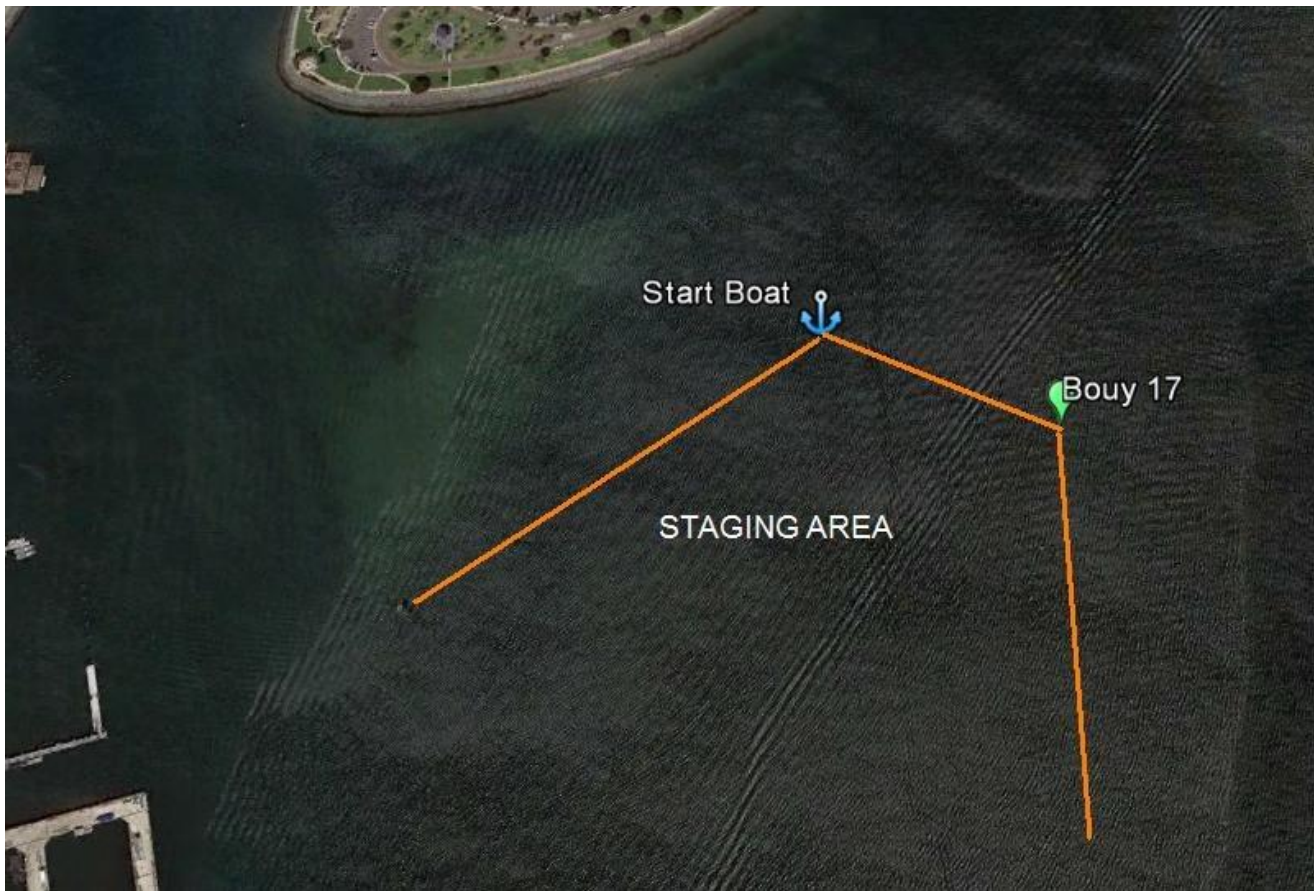
#### SAFETY TIPS:

1. All participants must strictly comply with Inland Rules of the Road.

2. Coast Guard has final decision on cancellation due to weather.
3. Go slow (approximately 5 knots) to minimize wake causing small boats to swamp.
4. Stay in parade line, and maintain your distance.
5. Don't leave the parade early. The boat behind follows you!
6. Stay as close to shore as safety permits (remember anchorage off Shelter Island).
7. Don't drink. The designated skipper shall refrain from consuming alcohol.

#### STAGING AREA/STARTING THE PARADE:

1. The staging area is southwest of buoy SD 17 outside of the main channel. See the diagram below:



2. Arrive between 9:00 AM and 9:15 AM. Monitor VHF Channel 6 for parade information at 9:15 AM. The Starting Line is between buoy 17 and the start boat with an Official Vessel banner.
3. There is no line-up assignment. Please, do not start prior to 9:30 AM. Follow the assigned lead boat across the start line. A lead boat will be assigned by the committee boat at the start line. Do not start before the lead boat crosses the start line. You do not have to check-in with the committee boat at the start.
4. Please do not start prior to 9:30AM. Join a loose formation from the southwest end of the Starting Line in one straight line behind the lead boat.
5. Boats over 70' fall in near the end of the parade.
6. Kayaks and outriggers (boats powered by hand) should attempt to start early and if unable to maintain the parade speed, let the boats under power pass.

## OFFICIAL PATROL VESSELS:

1. Provided by U.S. Coast Guard, U. S. Coast Guard Auxiliary and Harbor Police.
2. USCG and Harbor Police vessels display flashing blue beacons.
3. USCG Auxiliary vessels display red and yellow flashing lights.
4. Patrol vessels assist in maintaining the safety of the event.
5. Failure to obey instructions of any patrol vessel can be cause for disqualification.

## COMMITTEE BOATS:

1. Committee boats display large banners that read "OFFICIAL VESSEL".
2. Positioned around parade route to indicate route direction.
3. Parade route is between the committee boat and the shore.

## RADIO COMMUNICATIONS:

1. IMPORTANT PARADE BRIEFING by Perimeter Control - VHF Channel 6 at 9:15 A.M. before start - FOR ALL PARTICIPANTS.
2. Monitor VHF Channel 6 during the parade and follow instructions.
3. DO NOT TRANSMIT unless you have an emergency. (Call Ch. 6 and switch to Ch. 16).

## DISABLED VESSELS/EMERGENCIES:

1. Patrol vessels will monitor Channel 16 and respond in the event of an emergency.
2. The parade fleet will be kept informed on Channel 6.
3. If you have a problem and must leave the parade, pull out of parade line.
4. Sea Tow is available to provide free service to parade participants who are experiencing problems. Contact Sea Tow on VHF 16.

## THE PARADE ROUTE:

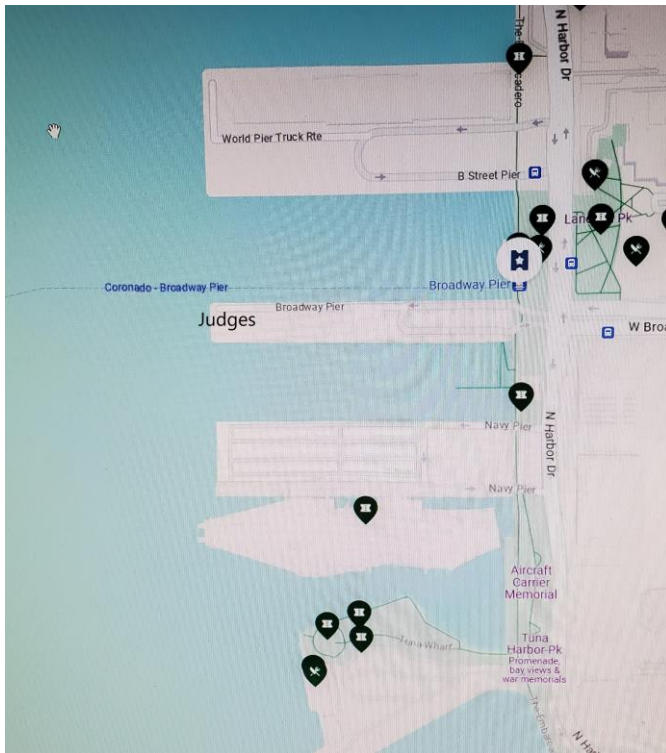
1. See the picture below:



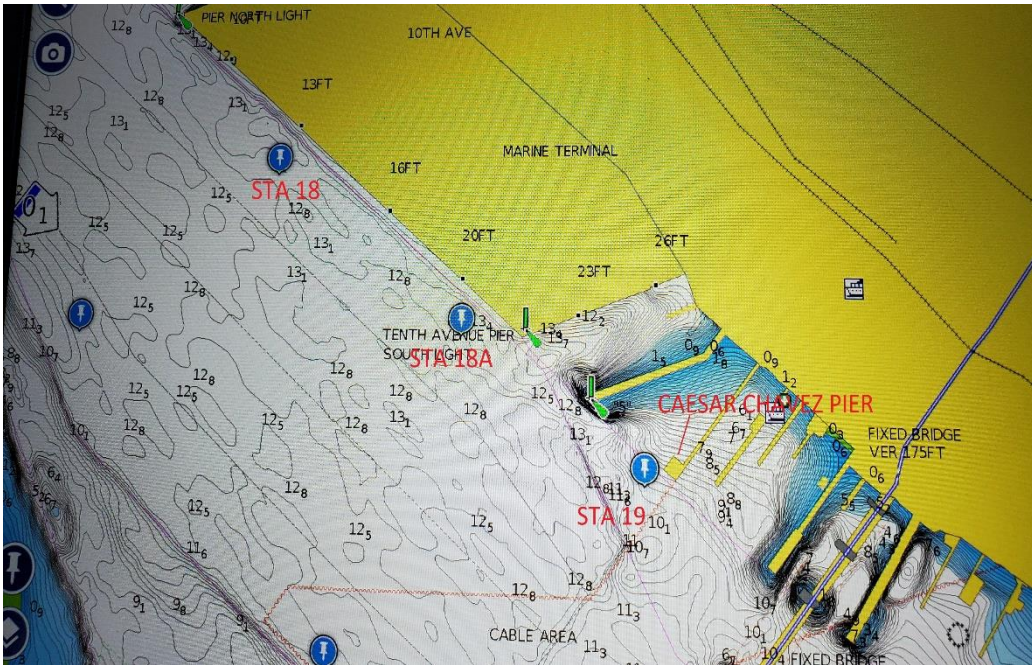
2. The Starting Line is between the Start Committee Boat and buoy 17.
3. West end to east end of Shelter Island.
4. East end Shelter Island across America's Cup Harbor entrance to west end Harbor Island
5. West end Harbor Island to east end of Harbor Island.
6. East end of Harbor Island to the Embarcadero north of Maritime Museum's ferry

"Berkeley".

7. Stay between the Committee Boats and the Embarcadero.
8. Pass by the Berkley to the end of the pier.
9. Move into the Embarcadero, pass by the Star of India's berth.
10. Move back to a point outside the pier.
11. Parallel the Embarcadero to a point off the bow of the Midway.
12. Pass the judging station on the Broadway Pier- see the picture below:



13. Pass Seaport Village and the San Diego Marriott Hotel and Marina Park.
14. Continue past the 10th Street Terminal building.
15. Do not cross the bay until you have passed the spectators on the Cesar Chavez Park  
See Pier location below:



16. Cross the bay to the Marriott Coronado Hotel. See the picture below:



17. Avoid non-parade traffic using main channel when crossing from the San Diego to Coronado side of San Diego Bay.
18. Proceed northwest to pass the spectators on the docks at the restaurant Peohe's.
19. Pass the docks at Peohe's and the Ferry Landing.
20. Stay on channel side of unlit nun buoy 22A and picket boat in that location to avoid shoal. This is the finish.

**JUDGING:**

1. The Judges will be located on the Broadway pier.

**PARADE AWARDS:**

Boats will be judged on originality and the creative use of decorations depicting the boat theme. Boats are judged in six categories.

Trophies will be awarded for boats decorated in the following Themes:

U.S. Army  
U.S. Navy  
U.S. Air Force  
U.S. Marine Corps  
U.S. Coast Guard  
Patriotic

Boats are judged in the following 4 categories:

Creativity

Music

Special Effects,

Theme

- Boat decorations and crew adherence to the theme
- Dressed in costume/boater's participation
- Originality
- Adaptation and variation of theme

A trophy will be awarded for the best decorated boat in each category

AWARDS PRESENTATION: TBA

POLITICAL DISPLAYS

The Fleet Week Veterans Day Boat Parade is intended to honor our veterans and the members of our military. Political displays or signs are inappropriate in this venue. Boats that are observed displaying Political displays of any kind will be asked to leave the Parade and will not be invited to participate in future Fleet Week Boat Parades.